

古

泉

匯

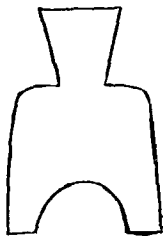
古泉匯元集卷一

古布類共十四卷

利津李佐賢竹朋編輯

男貽良校字

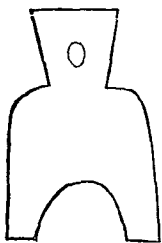
方足布



虞一金化

此布倒書其文傳形自左及右讀之面背俱有周

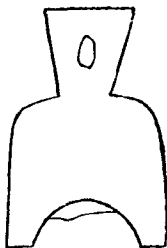
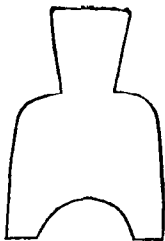
郭卅者虎也。或者吳也。贖金釋文之言可取。介乃貨字之省書。懋遷有無化居。从化去貝。可證凡刀布化字皆倣此。一金言此。可直一金也。或疑此爲虞號之虞。然形模與列國小布不類。且皆倒書。類安邑布。或卽有媯氏物歟。



虞一金化

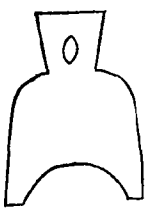
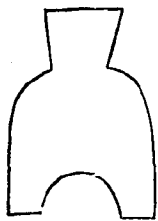
文同前面無郭背有郭柄有好虞字小異

虞化一金 女自右讀曰化一金化反書面背有郭上有好



虞金化 亦自右讀俱缺一字一面無郭背有郭柄有好不透

虞字半泐次面背有郭柄無好虞字口作又亦異

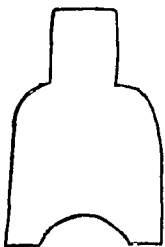


虞化半金 亦自右讀製同上而較小柄亦有好面背則郭文
曰半金蓋直前品之半也半金化爲古布所僅見舊譜無徵今
爲吳子苾閣學所藏又有文曰虞化一金製更小於半金者僅
見拓本未定真偽故不摹



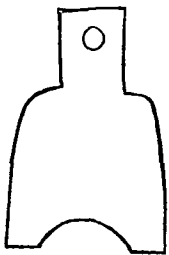
乘正尙金尙爰 正書面背無郭考管子有虞茨乘馬及請問

幣乘馬云云路史以此幣當之諸譜多從其說贖金釋文乘之
爲言四也猶四矢曰乘矢四壺曰乘壺之類此只取四馬爲乘
之義故得策乘馬之稱正者其文皆正不同倒書者也尙同上
言上等之金也尙卽當省敵也爰乃鏹省合而言之此布直四
枚正書一金之貨乃最上之金可敵贖罪之鏹也

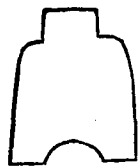


乘正尙金尙爰

三品文製同前惟面背俱有周郭次金字缺



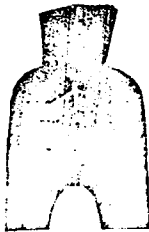
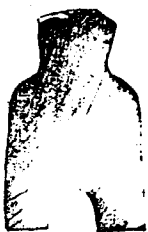
下畫背同一品故不摹下做此三柄上有好乘字中畫斷



乘半尙二金尙爰 此二布絕小面背周郭亦自右讀次品柄

有好乃乘馬幣之別種乘半者言此幣可直乘馬幣之半也尙

二金者言上等之第二品金也



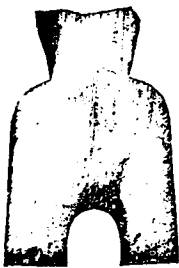
乘充化金金當爰

背陰文

充

此亦乘馬幣之別種而背無

郭次背有陰文充字乘充化金者言此布可充當直四枚之化金也金當爰者言此亦可當贖罪之錢也或疑兩金字豈不犯複然安邑金背復有安字齊法化背復有化字十貨大布面背皆曰十貨卽此布背復有充字則正面又何妨兩金並用蓋金以利用恐小民愚昧故重言以申明之免致錯誤不厭其複也





乘充化金五二十尙爰

背陰文

充 二品亦乘馬幣別種形

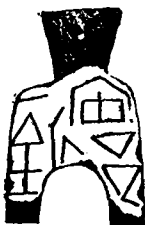


錢同前而較大面文五二十爲異次品背陰文充字亦同前五
者謂一枚可直一金之五枚二十者謂二枚可直一金之十枚
也一枚直五二枚直十數目了然令民易曉贖金釋文言此自
有書契以來夾行子注之始背充字有作金者



乘充化金五二十尙爰

文製同上惟面有周郭爲異



安邑化一

金

背安

正書自右讀面背無郭背復安字



安邑化金

背安陰文

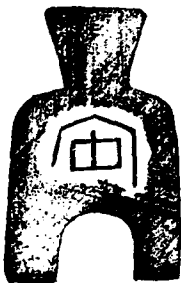
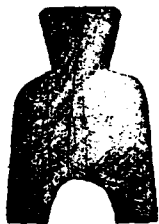
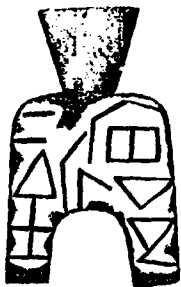
充

製同上面無一字而背上有充字路

史舜禹皆都安邑或卽虞夏時物背復有安字者贖金釋文言所以別於剗書者也不識不知之民豈諳文義正書倒書布之貴賤分焉卽背文以示區別俾易識而無濫用前民利用之精意爲焉矣其說近理背有陰文充字者與乘馬幣同言此布亦可充當贖金也



安邑化一金 文製亦同上惟倒書背無字



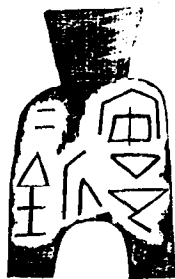
安邑化二金

背

安

正書自右讀形類前品而較大此作二金

言倍一金之直也卽後世當二錢之權輿化金二字或讀爲鉞
然虞布及此布一金二金皆作一行貫化字另作一行不與一
二字貫則化金確爲兩字無疑又見皖江倪氏譜有一品小及
此布之半亦猶乘馬幣之有小品者頗奇未見其泉故不摹



安邑化二金

背

安

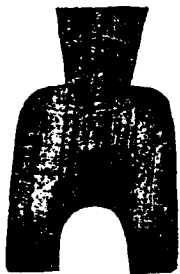
陰文

充

文製同前背上充字與一金貨同

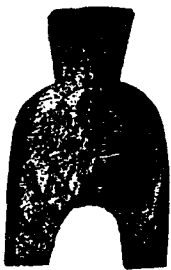


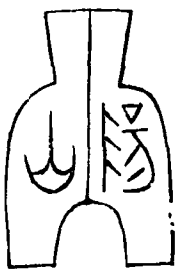
安邑化二金 倒書自左讀製同正書者惟背無安字次品安
邑二字連綴書此布正書者罕倒書者所見甚夥篆法亦多小
異者摹二品以概其餘不求備也又有柄有好者乃後人所鑿
並非別品故不摹





安邑化一金 一二字缺一畫次全缺皆鑄範不精所致



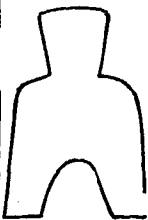
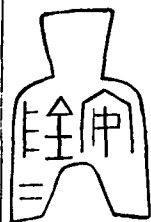


山陽 二品文同一面無郭次面有郭俱中一豎畫背平貨布
文字攷按史記始皇八年嫪毐封爲長信侯與之山陽地遂斷
爲秦幣然形與列國布不類方首圓肩頗類古金故附於此詩
在南山之陽山陽者山南之通稱未必定屬秦地也



山陽

二品文製同上以次迭小一面有郭次面無郭背俱平



安陰二 地名無攷或卽安陽之北邑二卽當二之義以上布

皆方首圓肩以下俱方肩



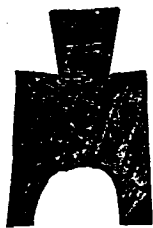
口 面背俱平上有好文作口陳壽卿侍讀釋爲城字象形愚

意或國字減筆其義皆同列國刀及畿字布皆有此字

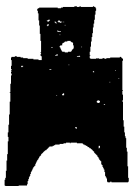


甫反化一金 面背俱平甫反卽蒲坂詩地理考舜都蒲坂疑
是虞布然形模與下二品同似一時之制且漢書地理志有蒲
坂縣是蒲坂地名經久未改焉知非後世所鑄故與京穎等布
連類及之吉金錄讀爲涑城引左傳伐我涑川屬晉地其義亦
通

不
 透
 背
 俱
 無
 郭
 穎
 省
 偏
 旁
 作
 永
 左
 傳
 隱
 元
 年
 置
 姜
 氏
 於
 城
 穎
 注
 永
 一
 金
 化
 形
 類
 蒲
 坂
 布
 而
 倒
 書
 一
 面
 無
 郭
 次
 面
 有
 郭
 柄
 有
 好



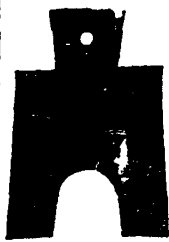
鄭邑



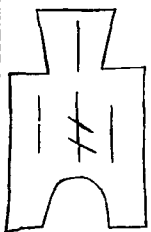
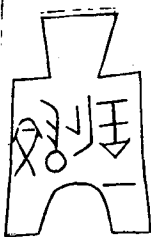
泉半金化 製同上而小柄亦有好半金者一枚直類貨之半枚亦猶虞化之半金也亦吳子苾所藏



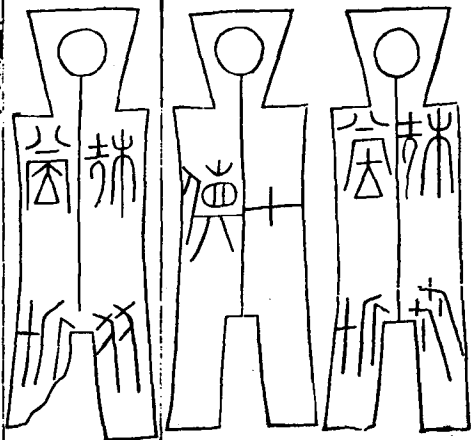
京化一金 形類前品京字倒書餘正書左傳隱元年謂之京
 城大叔浮鄭邑

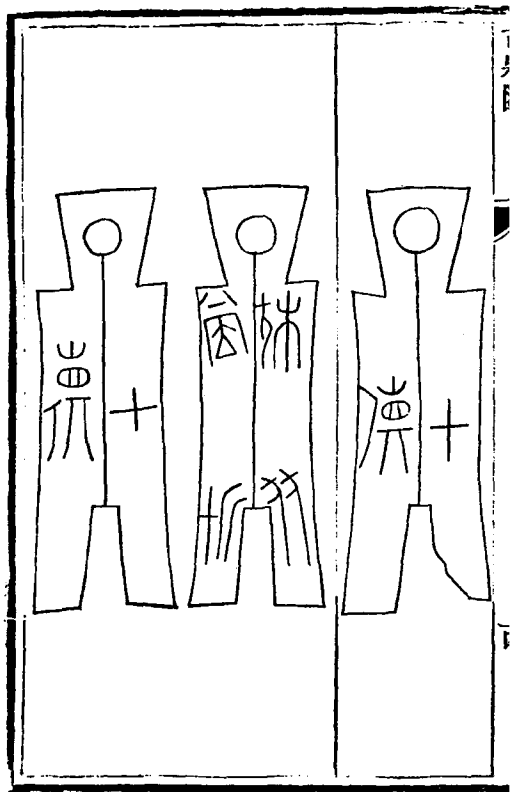


晉易化一金 二品文製同面背俱無郭倒書陽省作易易一
柄有好國語趙簡子使尹鐸爲晉陽國策智氏信韓魏從而伐
趙攻晉陽之城係晉地後屬趙



晉易化一金^背二 同前品而易字傳形背三直文二字斜書
曾見皖江倪氏泉譜有小布經五六分文與大晉陽布無異惜
僅見拓本真僞未決也

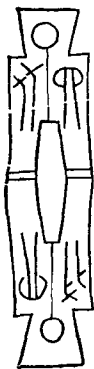


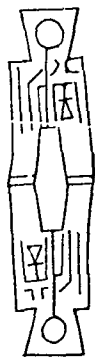


殊布當十化^背十貨 三品製同篆異面背周郭上有好中有
豎畫此布通志謂商貨莊布諸家聚訟迄無定論第一字類殊
字言此迥異諸布乃殊尤之品也第二字古泉彙考釋爲布字
畫縱橫如織布文當是布字象形其說可取殊布當十化言一
枚可直十化金也背作十貨者恐愚民易惑復重言以申明之
也至化貨二字繁簡互異彙考云古器銘同一器同一字往往
筆畫多寡偏旁位置上下不一乃知秦以後文歸一律古文未
必盡同非小篆說文所能賅括也彙考又摹篆文各異者十餘
種吉金錄又有兩面十貨同文者今未盡見摹三品以概其餘

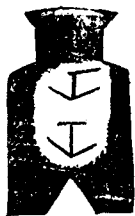


四布^背當十化 兩面五字製同前而小四布當十化猶言四
 枚可直十化金也與前品大小懸殊故一當十四當十所直亦
 懸殊此卽後世當一當十錢所由昉此布確係連幣之剪斷者





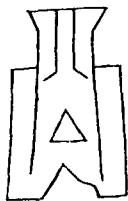
四布四布背當十化當十化 此卽前品未經剪斷者俗名曰
連布以其連而不斷名之也十字泐其橫畫彙考又載有兩面
四布四布同文及兩面當十化當十化同文二種世或有之今
俱未見凡同文泉皆錯用泉範乃工匠之誤非別種也



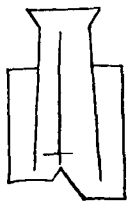
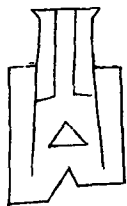


垂 背 六 二 品 同 面 背 無 郭 背 二 直 文 首 雙 尖 左 右 歧 出 兩

尾 間 作 人 字 形 較 異 他 布 次 背 文 六 字 省 文 倒 書 春 秋 隱 八 年
宋 公 衛 侯 遇 於 垂 桓 元 年 公 會 鄭 伯 於 垂 注 皆 衛 地



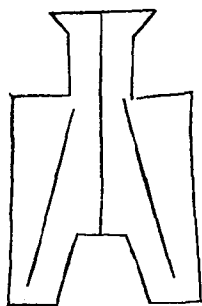
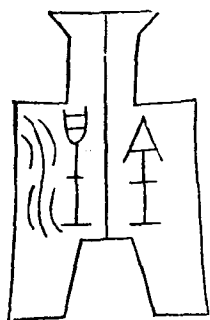
公 形同前品而面背有郭面兩直文背三直文公或取公所
之義如公府公田之類猶錢布之有官考也



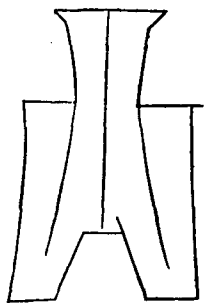
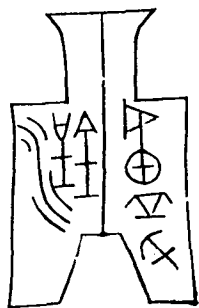
公背

一 面同上而背有一字亦似連中直作十字或疑爲上

字合面文讀爲上谷非也古幣背文紀數者多如垂字背有六
字此布背有十字想俱有自一至十各品今特未盡見耳



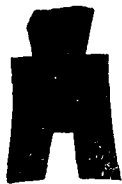
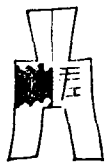
涅金 形全前品而差大二字左讀背一直文二斜文吉金錄
攷水經注涅陽在西北岐棘山東春秋屬鄧國戰國秦穰邑小
布涅字者頗多當係一地所鑄或鑄有先後故形模各異歟



盧化涅金 四字左右讀形製同前涅金亦見前左傳成十七
 年高弱以盧叛注齊邑化字亦似氏字路史國名記有盧氏按
 地道記郡國志云西虢之別然一布而兼兩地名義不可解各
 布亦無此式此劉燕庭方伯所藏色澤極古洵僅見之品



此布字不可識一二品一正書一傳形面有郭背俱平三亦傳形而背有郭並三直文或謂平係平土二字



差陰 二品文同次品較小吉金錄釋爲差陰差減水旁今姑
從之左傳楚令尹鬬郢莫敖屈重除道梁差注差水在義陽此
布所見文皆不晰陰字从金尤異差字與前品差字相似



益昌 面文同一背平次三直文此布或曰恭昌或曰燕昌吉
金錄釋爲益昌今從之地理志益昌屬涿郡春秋爲燕地此布
與涿字布當一處所鑄

附

未見方足異布

異二二作兩豎畫

子午金

午正書在中子金倒書在下

束貨一金 貨作化

平易金鍍法正

鍍作爰法作止正作止以上皆圓肩方足

枚八貨

枚作神貨作七俱倒書方肩方足

舊譜所載尙不止此字不可識者不錄下倣此

古泉匯元集卷二

方足布



平陽 平易 自右讀背平二品同惟次易字減筆

夨

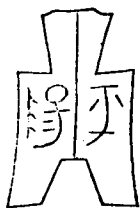
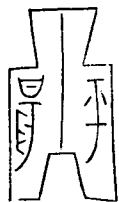
夨

夨

夨

夨

夨



夨

夨

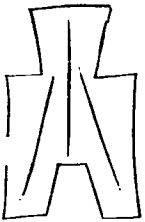
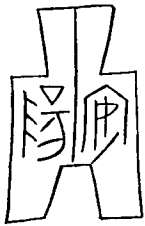
夨

夨

夨

夨

平陽 平陽一 各品篆法互異，末品面上多一橫畫，背三直
文，各品俱同，摹一品以概其餘。春秋宣八年城平陽，注東平陽。
左傳哀二十七年公及越后庸盟於平陽，注西平陽。史記秦本
紀十三年，桓齮攻趙平陽，應邵曰：在平河之陽，堯所都也。吉金
錄曰：近時此布多與長子屯留諸布同出，應是趙鑄，然今所見
品類繁多，應非一處之物。



安陽 前三品以次迭大四品至九篆各異十更大史記秦昭

襄王五十年拔甯新中地志曰甯新中七國時魏邑秦昭王拔

之更名安陽

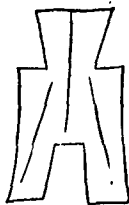
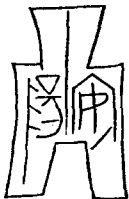
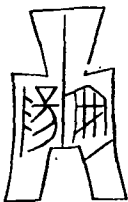
平陽 文全上，前二品自左讀，後三品傳形。





安陽 前二品較小後三品差大背俱平五陽字傳形





𠩺

𠩺

𠩺

𠩺

𠩺

𠩺

安陽

傳形亦大



𠩺

𠩺

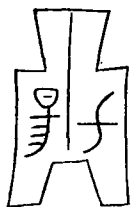
𠩺

𠩺

𠩺

宅陽 八品形同篆異史記韓世家懿侯五年與魏惠王會宅陽正義曰在鄭州宅字或疑爲氏然氏羌在西夷此布多出北省故仍從舊譜釋文





宅陽 𠄎易 一二二品傳形三宅字減筆四五二字俱減亦

猶貨之作化錢之作爰也六減筆並傳形最異乃鮑子年中翰所藏



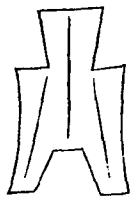
荀易 陶陽省文二品次傳形背俱平書東出於陶邨北說文
陶邨在濟陰國策秦封君以陶按邑名布背皆三直文背平者
殊少乃異品也





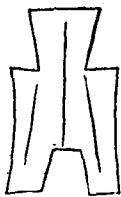
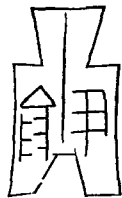


周易 音左 午右 右一 有大 而文同前背一二三直
 文三錯範四五左在左右六左一七八右在左右九十右一在
 左右十一右大十二右變體凡面同背異者只摹背文下倣此





魯陽 五品面文小異六魯字無陽字背俱同竹書紀年孔甲
七年劉累遷魯陽戰國屬韓

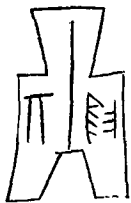


尹陽 尹卽伊之省書又東北會於伊左傳文八年遂會伊維
 之戎路史伊今洛之伊陽縣有伊水



宜陽

宜字下勛陽字減筆傳形國策秦攻新城宜陽



陽

傳形吉金錄謂卅卽其字省左傳定十年公會齊侯於

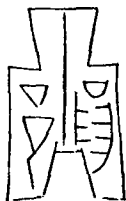
祝其其實夾谷齊地



陽

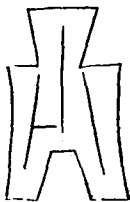
左傳文十有六年楚大饑戎伐其西南又伐其東南至

於陽正陽正自係楚地



陽邑

二品陽字篆微異漢書地理志陽邑屬太原郡

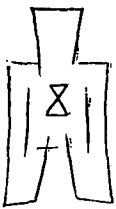
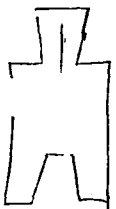


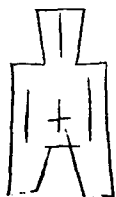
平陰

背一

二品面異背同三背文一左傳襄十八年齊侯

禦諸平陰注在濟北昭二十三年齊師在平陰春秋地名考故
城在今河南孟津縣





大陰

背

五

十

面文同一陰字

居中

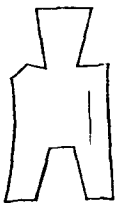
次中

分直

畫背

文五

三背文十路史陰古國名左傳哀四年使謂陰地之命大夫士
蔑注陰晉地或亦名大陰歟方小東謂太行之陰義亦通



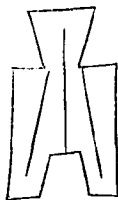
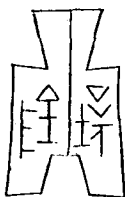


大陰

背

九

全前一傳形次二字居左陰字尤離奇背文九



壤陰

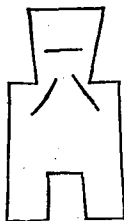
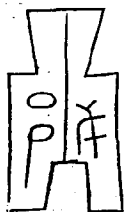
篆與黠垣同惟去支旁易土旁應屬壤字壤陰者壤之

北也春秋公會晉侯宋公衛侯鄭伯曹伯於黑壤公羊傳狐壤

之戰隱公獲焉狐壤屬鄭地

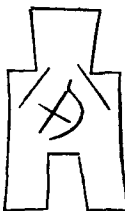
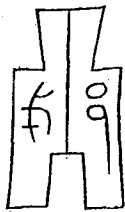
古泉匯元集卷三

方足布



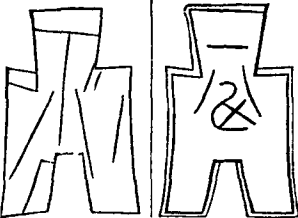
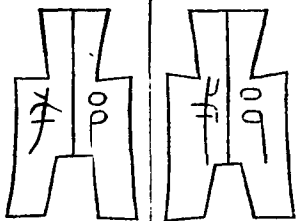
戈邑背

一八 自右讀背文一八減化字



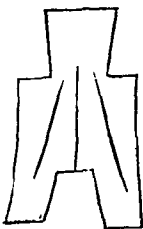
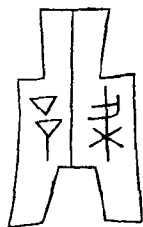
古泉匯

元三

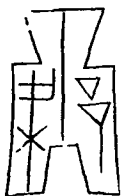


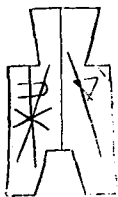
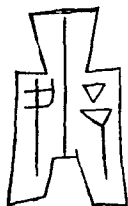
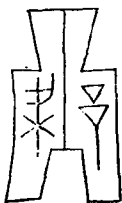
戈邑背 八化 一八化 自左讀一二邑字皆傳形背文八化

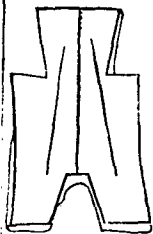
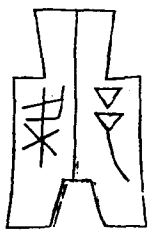
一八化三戈字傳形背三直文錯範左傳寒泥處其子於戈注
在鄭宋之間一八化謂此布厚重一可當小布之八也



乘邑 自右讀舊譜釋爲梁邑按第一字卽乘馬幣之乘字春
秋莊十年公敗宋師於乘邱注魯地今多出鄒魯燕趙之間當
係魯幣







乘邑

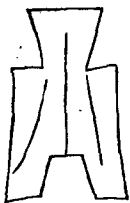
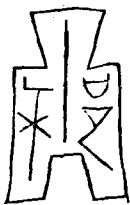
背

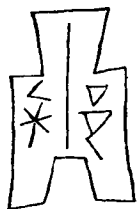
乘

乘口

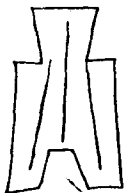
自左讀一二邑字小異三乘字減筆四

背左乘字五左乘右邑邑字減筆古布從來未見合背同文者
僅見此品六形製差大





邾 左右合爲一字一二品篆微異三傳形左傳隱元年欲求
好於邾又襄四年使我敗於邾韻府邾係國名又係地名



朱子 朱卽邾之省兩字俱傳形左傳莊五年邾犁來來朝注

王命爲小邾子



邾

背

一

二

品亦邾字變體與前品異然既有國名地名之

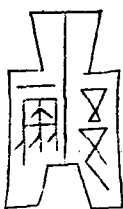
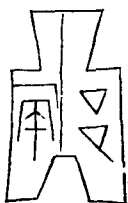
別安知非兩地所鑄故篆亦不同歟次背紀數又有人字者僅

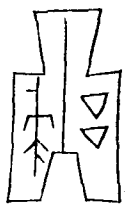
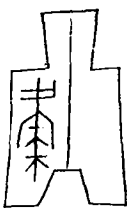
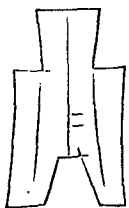
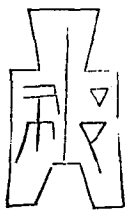
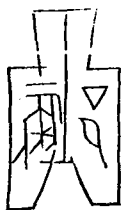
見拓本

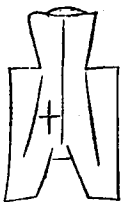


未邑 未卽妹省書酒誥明大命於妹邦注妹土商之都邑武
王以封康叔應屬衛地或釋爲邾字滅筆亦可







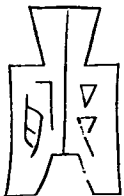
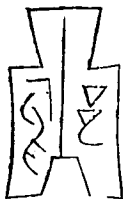
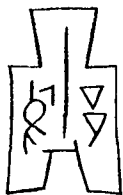
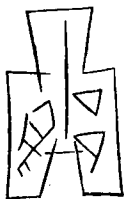


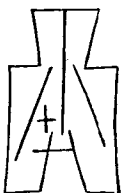
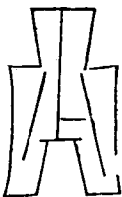
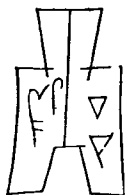
彘邑

背

二十 十三品面文各異惟十一缺邑字自一至

十一背皆同十二背二十三背十吉金錄釋爲彘邑攷厲王居於彘國語注彘晉地彘字筆畫繁簡無定益信古文增減不拘六書之法凡背文數目字皆自一至十俱全此僅見二品癖談云小幣幕紀數非紀直也範之次第也不然大小輕重同何直一直十如此相懸乎信然以下倣此

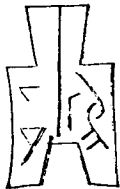
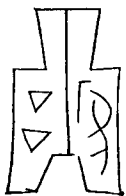




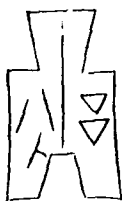
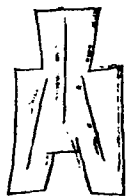
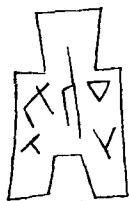
鄔 背 一 十 七 品 面 文 各 異 自 一 至 五 背 同 六 背 一 七 背

十左傳昭二十八年晉司馬彌牟爲鄔大夫注晉邑春秋隱十

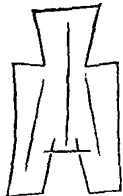
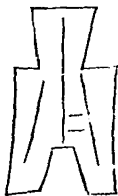
一年王取鄔劉注鄭邑



鄔 傳形二品面文小異背同三背八



口邑 二品左不可識疑亦鄔之變體姑附於此

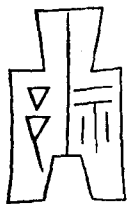


祁

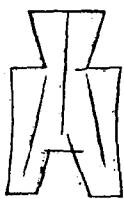
背

二 一 二 面文小異三背文二左傳昭二十八年賈辛

爲祁大夫注太原祁縣

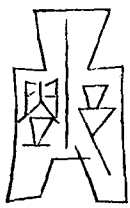
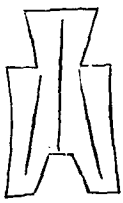
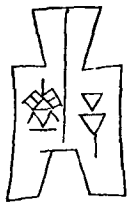


祁傳形



共邑

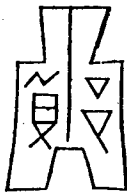
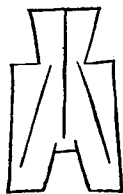
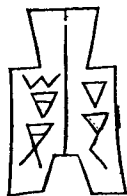
左傳隱元年太叔出奔共注今汲郡屬鄆地



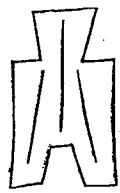
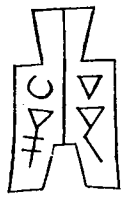
鄆 二品面異背同舊譜未見左傳桓二年蔡侯鄭伯會於鄆

始懼楚也莊六年楚文王伐申過鄆鄆係近楚小國亦似鄆字

互見鄭字布注

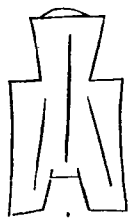
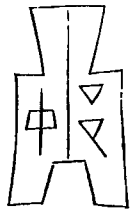


郎 面異背同郎魯地春秋隱九年夏城郎吉金錄釋爲鄭左
傳僖二年冀伐虞至鄭注虞邑後屬晉說可並存

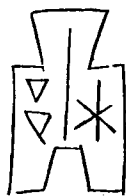


莘邑 貨布文字考釋為莘邑孟子伊尹耕於有莘之野春秋

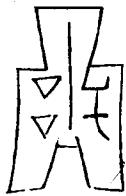
莊三十三年有神降於莘地名考屬陝州莘原



中邑 方小東刺史云邑當為都之省注互見卷四中都布

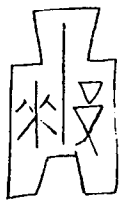


木邑 木卽沐省公羊傳天子有事於泰山諸侯皆有湯沐之邑焉去湯字省文也方小東云此卽今之沐陽說亦可參

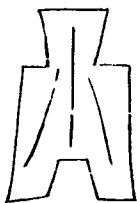


干邑 方小東據路史云蹇叔處干干國也又云段干李姓邑

也初邑段後邑干因邑而氏



邾 邾國名爲齊所滅左傳襄十四年齊人以邾寄衛侯



口邑

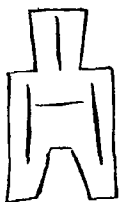
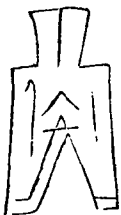
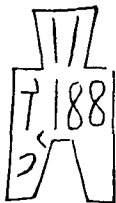
陳壽卿謂似戊字分爲二卽越字省文

龜氏八七

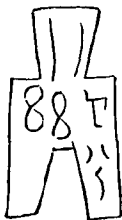
背

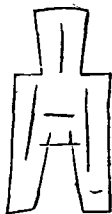
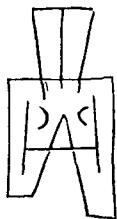
一 二 六

三品自右讀面文略同背文各異



舊譜釋爲茲氏屬趙地至十八七則向無確解愚意此88下有十字應連綴看是畿之省畿氏者畿內之民所鑄十或取道路四達之象亦通至尖足布有茲化二金茲字从艸乃茲邑所鑄與畿布殊七卽化省八化言此八枚可當古一化也此布輕小古布厚重故以一抵八適足相當以下凡有八化者倣此方小東云太原有茲氏城見晉志仍當釋爲茲氏今並存兩說俟考







畿氏八七

背

一

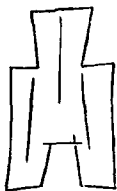
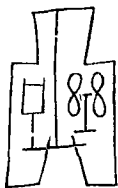
八

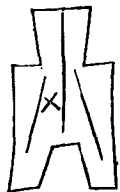
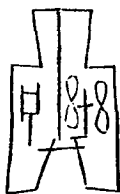
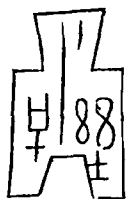
三

卩

六品自右讀一缺十字二

缺十七字背俱平三至六面同背一八上五豎畫下三上三字
橫書下十各異此布尖足者多方足者不數數觀也





畿城

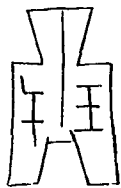
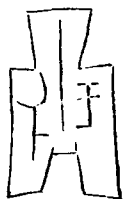
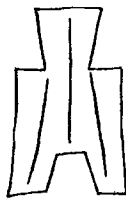
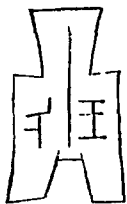
背

五

四品畿下作土字與前作十字者小異大同三

面作王字益信爲王畿之物背三品同四品五字作又見古孝
經口卽象形之城一十上皆象入城之路也前品畿氏應畿甸

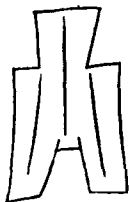
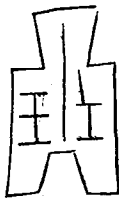
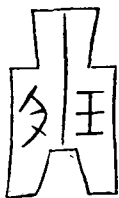
所鑄此言畿城乃城內所鑄所以別於畿氏者也

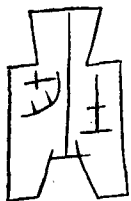
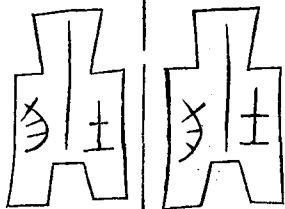


王氏 氏字各異背同此亦王畿之物前曰畿氏此曰王氏其
義一也與列國布並列無異亦猶國風之有王風也

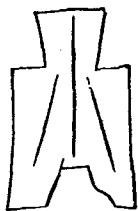
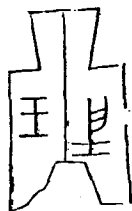
王氏

傳形面文各異



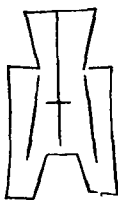


王毛 土毛 一曰王毛二三四曰土毛當取踐土食毛之義
亦王畿之物王氏之變體也方小東據路史云毛伯爵河南籍
水傍有毛泉近上邽說亦可參



王口

左王字右文未識疑亦土毛二字合書



皮氏

背

一

六

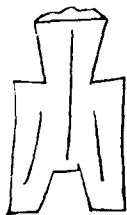
面同次背一三背六減筆此布舊譜曰皮

氏史記本表魏哀王十三年秦擊皮氏地志春秋晉大夫之采

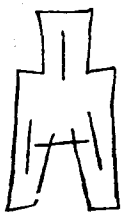
邑



鄒氏 文小異左傳昭二十三年二師圍郊癸卯郊鄒潰注鄒
周邑彙攷釋爲鄒云左傳戎蠻子公羊作戎曼子此加邑旁



奇氏 奇疑猗之省漢志上黨郡有猗氏地名或漢前已有之





平周

背

四

面同次背文三卽四字史記本表魏襄王十三

年秦取我曲沃平周蓋魏地爲秦所并也

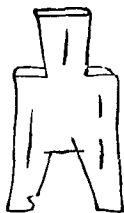
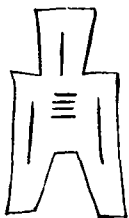


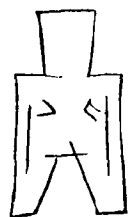
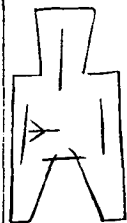
平周

背

二

傳形





平周

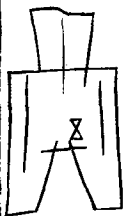
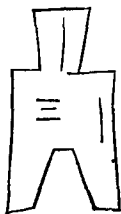
背

一四七

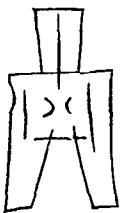
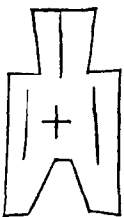
八九

面文在右背一無文一至

六紀數五種缺五種

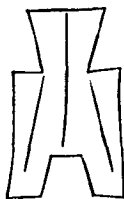


平周 背 三 五 八 十 面文在左背一無文二至五文
 紀數四種缺六種道光年都市古小布甚多皆新出土者就申
 此品字畫細如毫芒數千年竟未漫滅亦僅見之物也





平工 工當係江字省文宋時蘇州名平江而上古地名無可
考惟春秋僖二年秋齊侯宋公江人黃人盟於貫注江國在汝
南此布或卽彼處故物歟





平原 二品面文小異方小東云備卽古原字石鼓文遼之省
愚按賈誼過秦論趙有平原係戰國平原君所封之地